



Wind Park, and Communal Lake

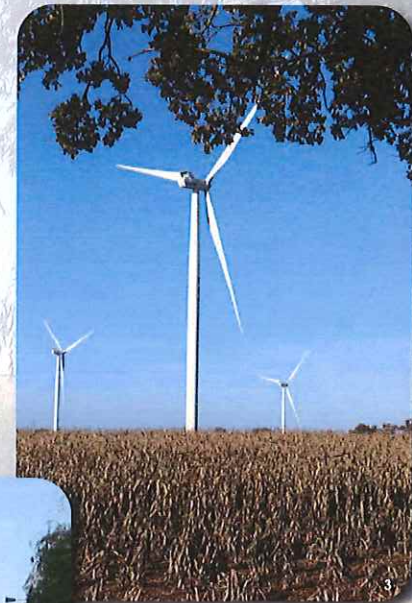
Returning to the village, you will see the wind farm, which has 10 wind turbines for an installed power of 20 megawatts, equivalent to the electric consumption of 20,000 homes. (except heating)

The recent installation responds to the desire of the municipality to promote a production of renewable energy.

On the right, you will discover the pond, created in 1995, for bathing (july and august only), leisure and fishing. Its depth reaches 13 feet at the dam, for an area of 3 acres. It is fed by run-off and a small wind turbine that pumps water from a bore hole.

The path leads to the amenity area, where you will find a recreational space for picnics, a children's playground and public conveniences including shower.

It is therefore possible to conciliate the quality of life and the research for renewable energies.



1. The recreation area
2. The communal pond
3. The wind farm

Among the sources of energy, look for which is not renewable ?

- Sun
- Biomass
- Oil
- Wind



Oil is a source of exhaustible fossil energy.